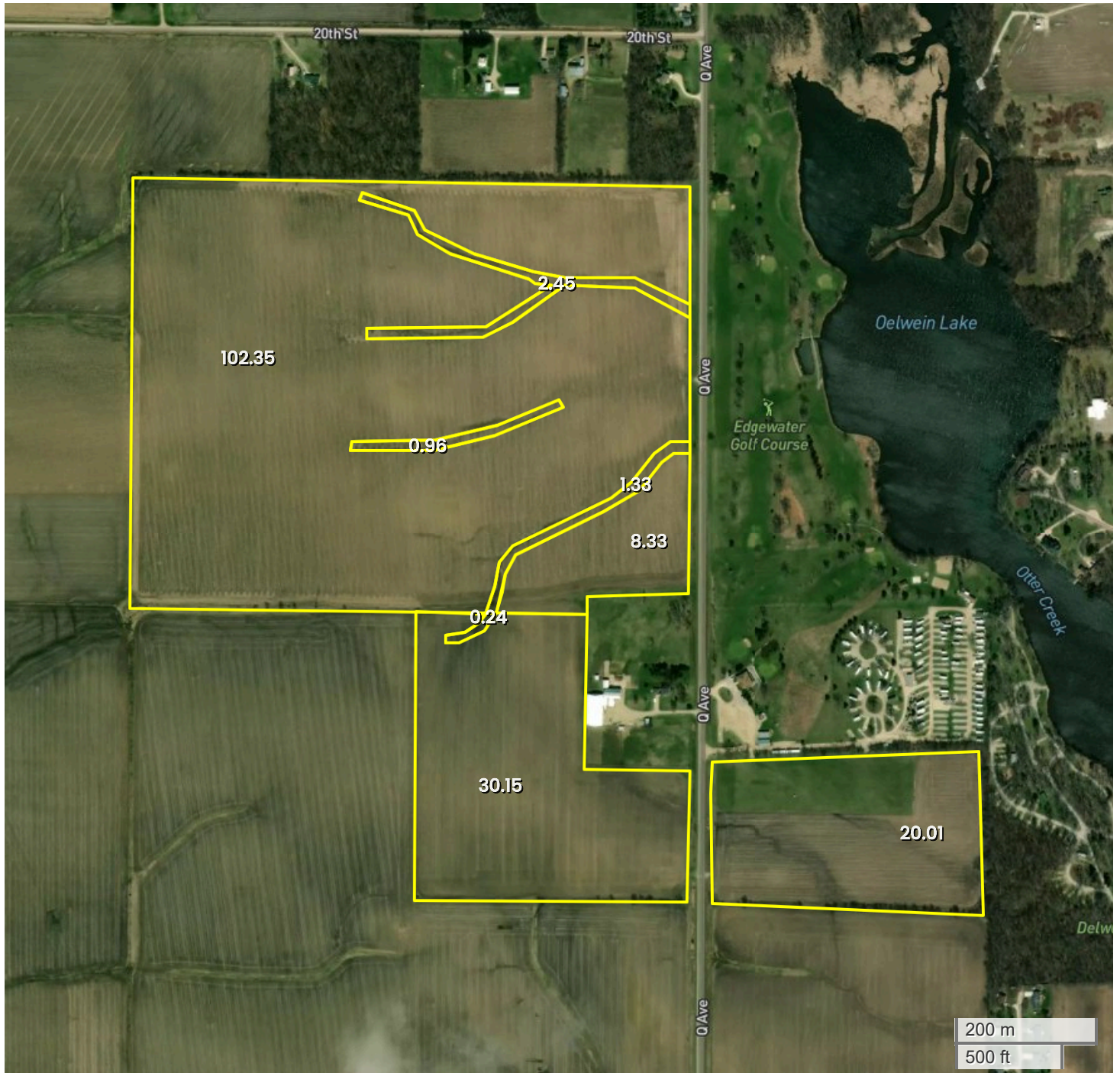




OELWEIN, IOWA FARM (170.80 AC TOTAL, 165.82 AC TILLABLE)

## AERIAL MAP



Center: 42.649968, -91.926024

32-91N-9W

Jefferson Township

Fayette County, IA

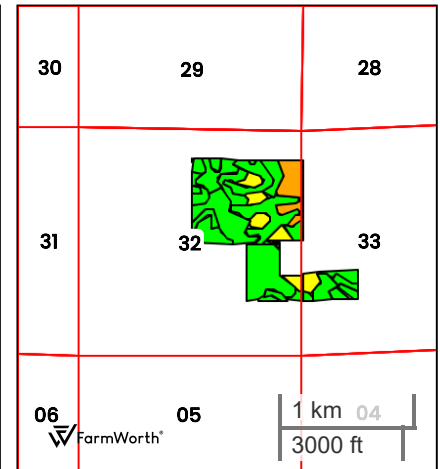
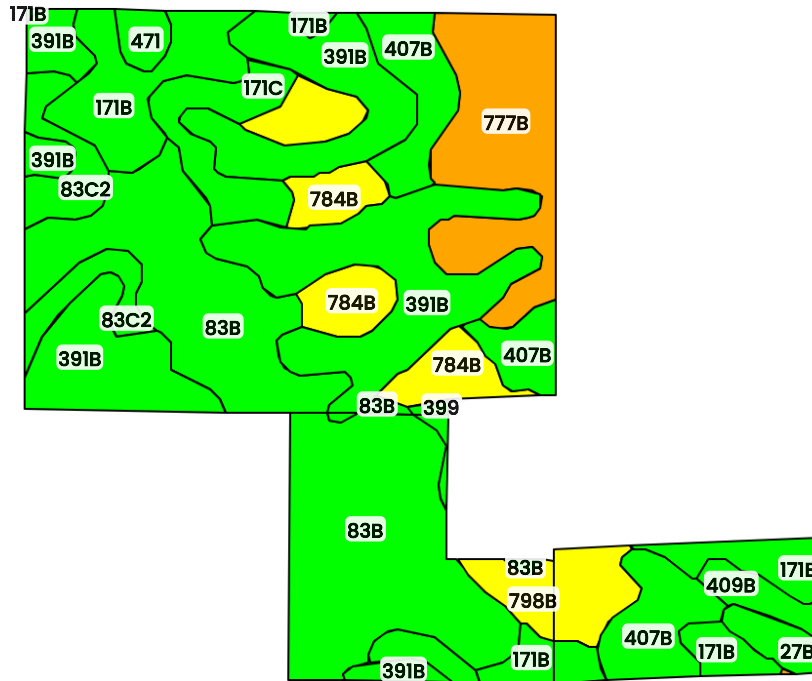


FarmWorth, LLC makes no representations or warranties, express or implied, as to the accuracy of any information, data, numerical values, boundaries, or any other information generated through the use of FarmWorth.com. User is solely responsible for independently investigating and determining all information provided through FarmWorth.com prior to use and waives any and all claims against FarmWorth, LLC for any inaccuracies or inconsistencies in the information and/or data.



OELWEIN, IOWA FARM (170.80 AC TOTAL, 165.82 AC TILLABLE)

## TOTAL SOILS



County: **Fayette County, IA**

Location: **32-91N-9W**

Township: **Jefferson**

Acres: **170.80**



Date: **09/26/2025**



Field borders obtained from Farm Service Agency  
as of 2008

FarmWorth, LLC makes no representations or warranties, express or implied, as to the accuracy of any information, data, numerical values, boundaries, or any other information generated through the use of FarmWorth.com. User is solely responsible for independently investigating and determining all information provided through FarmWorth.com prior to use and waives any and all claims against FarmWorth, LLC for any inaccuracies or inconsistencies in the information and/or data.

Code	Description	Acres	% of field	IA CSR2	Overall NCCPI	Soil Class (Irr)	Soil Class (Non-Irr)	Drainage Class
83B	Kenyon loam, 2 to 5 percent slopes	43.70	25.58 %	90	89	-	2	Moderately well drained
391B	Clyde-Floyd complex, 1 to 4 percent slopes	40.63	23.79 %	87	89	-	2	Poorly drained
171B	Bassett loam, 2 to 5 percent slopes	16.92	9.91 %	85	87	-	2	Moderately well drained
777B	Wapsie loam, 2 to 5 percent slopes	15.92	9.32 %	45	66	-	2	Well drained
407B	Schley loam, 1 to 4 percent slopes	14.16	8.29 %	81	84	-	2	Somewhat poorly drained
784B	Riceville loam, 1 to 4 percent slopes	12.02	7.04 %	69	75	-	2	Somewhat poorly drained
83C2	Kenyon loam, 5 to 9 percent slopes, eroded	8.36	4.90 %	84	82	-	3	Moderately well drained
171C	Bassett loam, 5 to 9 percent slopes	6.37	3.73 %	80	86	-	3	Moderately well drained
798B	Protivin loam, 1 to 4 percent slopes	6.02	3.53 %	61	79	-	2	Somewhat poorly drained
409B	Dickinson fine sandy loam, till substratum, 2 to 5 percent slopes	2.35	1.38 %	74	54	-	3	Well drained
27B	Terril loam, 2 to 5 percent slopes	2.08	1.22 %	89	96	-	2	Moderately well drained
471	Oran loam, 1 to 3 percent slopes	1.58	0.93 %	74	80	-	1	Somewhat poorly drained

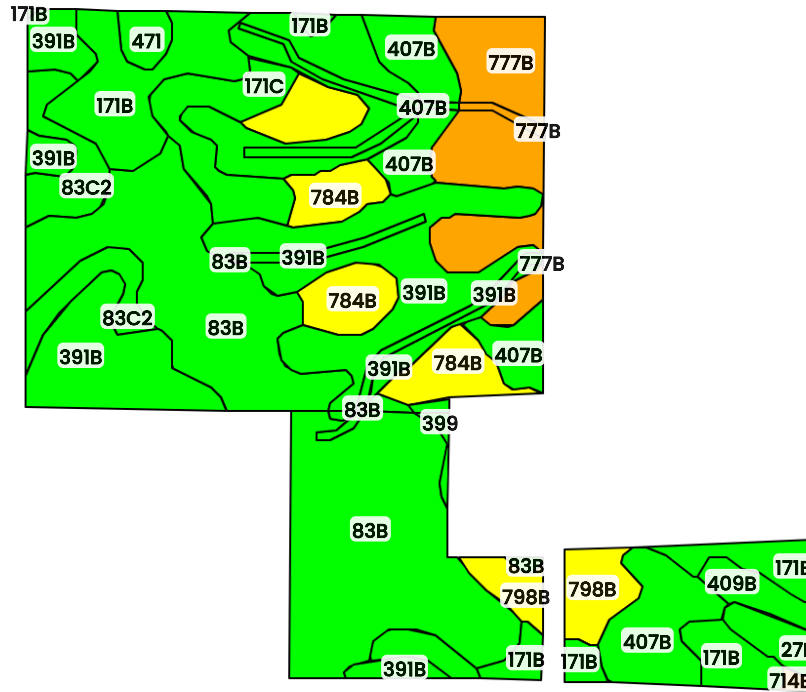
Code	Description	Acres	% of field	IA CSR2	Overall NCCPI	Soil Class (Irr)	Soil Class (Non-Irr)	Drainage Class
399 	Readlyn silt loam, 1 to 3 percent slopes	0.65	0.38 %	91	80	-	1	Somewhat poorly drained
714B 	Winneshiek loam, 20 to 30 inches to limestone, 2 to 5 percent slopes	0.03	0.02 %	42	62	-	2	Well drained
Average:				80.3	83.9			

IA has updated the CSR values for each county to CSR2.  
 Soils data provided by USDA and NRCS.

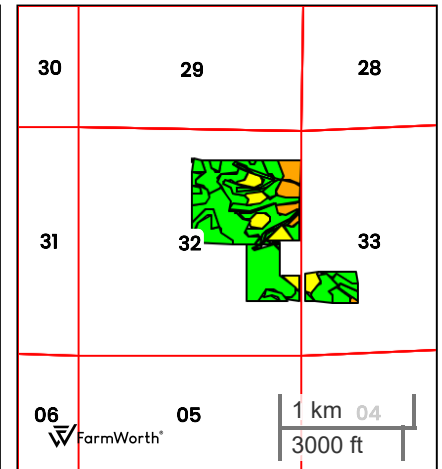


OELWEIN, IOWA FARM (170.80 AC TOTAL, 165.82 AC TILLABLE)

## TILLABLE SOILS



FarmWorth®



County: **Fayette County, IA**

Location: **32-91N-9W**

Township: **Jefferson**

Acres: **165.82**



Date: **09/26/2025**



Field borders obtained from Farm Service Agency  
as of 2008

FarmWorth, LLC makes no representations or warranties, express or implied, as to the accuracy of any information, data, numerical values, boundaries, or any other information generated through the use of FarmWorth.com. User is solely responsible for independently investigating and determining all information provided through FarmWorth.com prior to use and waives any and all claims against FarmWorth, LLC for any inaccuracies or inconsistencies in the information and/or data.

Code	Description	Acres	% of field	IA CSR2	Overall NCCPI	Soil Class (Irr)	Soil Class (Non-Irr)	Drainage Class
83B	Kenyon loam, 2 to 5 percent slopes	43.67	26.33 %	90	89	-	2	Moderately well drained
391B	Clyde-Floyd complex, 1 to 4 percent slopes	40.39	24.36 %	87	89	-	2	Poorly drained
171B	Bassett loam, 2 to 5 percent slopes	16.13	9.73 %	85	87	-	2	Moderately well drained
407B	Schley loam, 1 to 4 percent slopes	13.70	8.26 %	81	84	-	2	Somewhat poorly drained
777B	Wapsie loam, 2 to 5 percent slopes	13.61	8.21 %	45	66	-	2	Well drained
784B	Riceville loam, 1 to 4 percent slopes	12.01	7.24 %	69	75	-	2	Somewhat poorly drained
83C2	Kenyon loam, 5 to 9 percent slopes, eroded	8.31	5.01 %	84	82	-	3	Moderately well drained
171C	Bassett loam, 5 to 9 percent slopes	6.37	3.84 %	80	86	-	3	Moderately well drained
798B	Protivin loam, 1 to 4 percent slopes	4.92	2.97 %	61	79	-	2	Somewhat poorly drained
409B	Dickinson fine sandy loam, till substratum, 2 to 5 percent slopes	2.19	1.32 %	74	54	-	3	Well drained
27B	Terril loam, 2 to 5 percent slopes	2.00	1.21 %	89	96	-	2	Moderately well drained
471	Oran loam, 1 to 3 percent slopes	1.50	0.90 %	74	80	-	1	Somewhat poorly drained

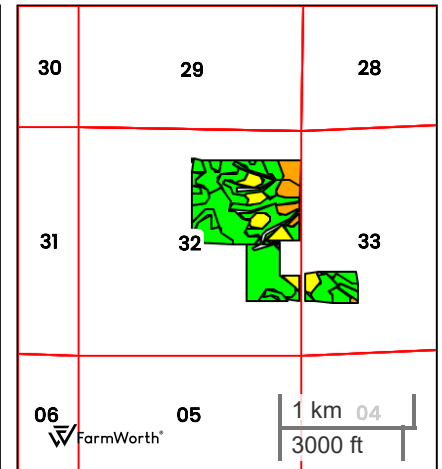
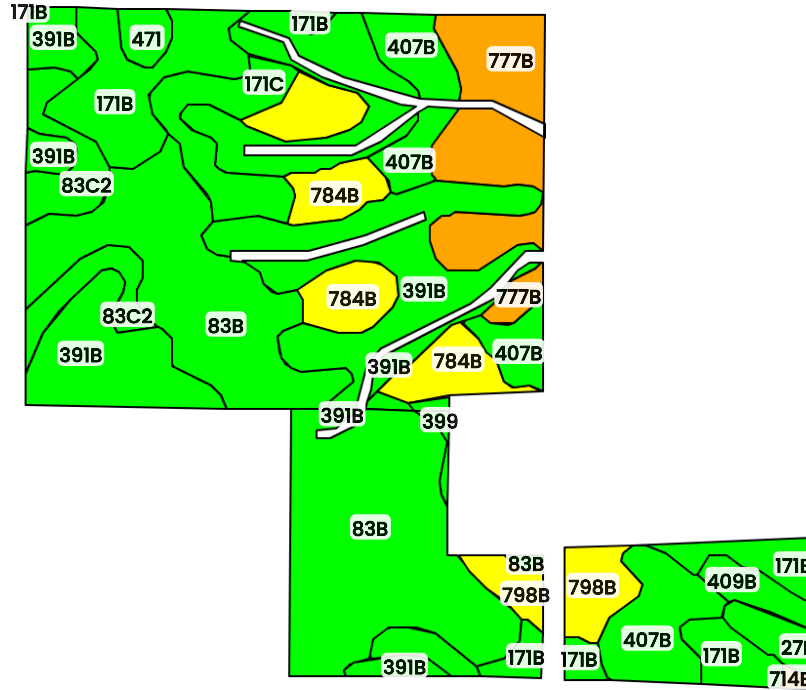
Code	Description	Acres	% of field	IA CSR2	Overall NCCPI	Soil Class (Irr)	Soil Class (Non-Irr)	Drainage Class
399 	Readlyn silt loam, 1 to 3 percent slopes	0.66	0.40 %	91	80	-	1	Somewhat poorly drained
714B 	Winneshiek loam, 20 to 30 inches to limestone, 2 to 5 percent slopes	0.35	0.21 %	42	62	-	2	Well drained
Average:				80.8	84.2			

IA has updated the CSR values for each county to CSR2.  
Soils data provided by USDA and NRCS.



OELWEIN, IOWA FARM (170.80 AC TOTAL, 160.84 AC TILLABLE)

## TILLABLE SOILS



County: **Fayette County, IA**

Location: **32-91N-9W**

Township: **Jefferson**

Acres: **160.84**

Date: **09/26/2025**





Field borders obtained from Farm Service Agency  
as of 2008

FarmWorth, LLC makes no representations or warranties, express or implied, as to the accuracy of any information, data, numerical values, boundaries, or any other information generated through the use of FarmWorth.com. User is solely responsible for independently investigating and determining all information provided through FarmWorth.com prior to use and waives any and all claims against FarmWorth, LLC for any inaccuracies or inconsistencies in the information and/or data.



Code	Description	Acres	% of field	IA CSR2	Overall NCCPI	Soil Class (Irr)	Soil Class (Non-Irr)	Drainage Class
83B	Kenyon loam, 2 to 5 percent slopes	43.42	26.99 %	90	89	-	2	Moderately well drained
391B	Clyde-Floyd complex, 1 to 4 percent slopes	36.30	22.57 %	87	89	-	2	Poorly drained
171B	Bassett loam, 2 to 5 percent slopes	16.13	10.03 %	85	87	-	2	Moderately well drained
407B	Schley loam, 1 to 4 percent slopes	13.53	8.41 %	81	84	-	2	Somewhat poorly drained
777B	Wapsie loam, 2 to 5 percent slopes	13.14	8.17 %	45	66	-	2	Well drained
784B	Riceville loam, 1 to 4 percent slopes	12.01	7.47 %	69	75	-	2	Somewhat poorly drained
83C2	Kenyon loam, 5 to 9 percent slopes, eroded	8.31	5.17 %	84	82	-	3	Moderately well drained
171C	Bassett loam, 5 to 9 percent slopes	6.37	3.96 %	80	86	-	3	Moderately well drained
798B	Protivin loam, 1 to 4 percent slopes	4.92	3.06 %	61	79	-	2	Somewhat poorly drained
409B	Dickinson fine sandy loam, till substratum, 2 to 5 percent slopes	2.19	1.36 %	74	54	-	3	Well drained
27B	Terril loam, 2 to 5 percent slopes	2.00	1.24 %	89	96	-	2	Moderately well drained
471	Oran loam, 1 to 3 percent slopes	1.50	0.93 %	74	80	-	1	Somewhat poorly drained

Code	Description	Acres	% of field	IA CSR2	Overall NCCPI	Soil Class (Irr)	Soil Class (Non-Irr)	Drainage Class
399 	Readlyn silt loam, 1 to 3 percent slopes	0.66	0.41 %	91	80	-	1	Somewhat poorly drained
714B 	Winneshiek loam, 20 to 30 inches to limestone, 2 to 5 percent slopes	0.35	0.22 %	42	62	-	2	Well drained
Average:				80.7	84.1			

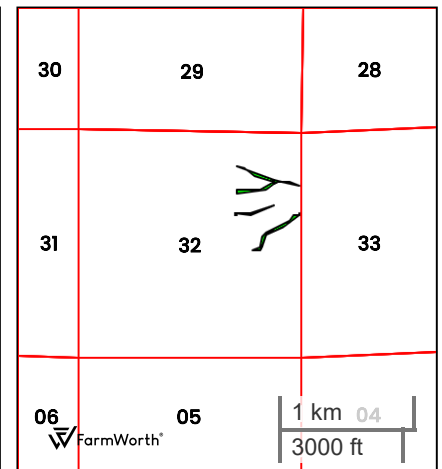
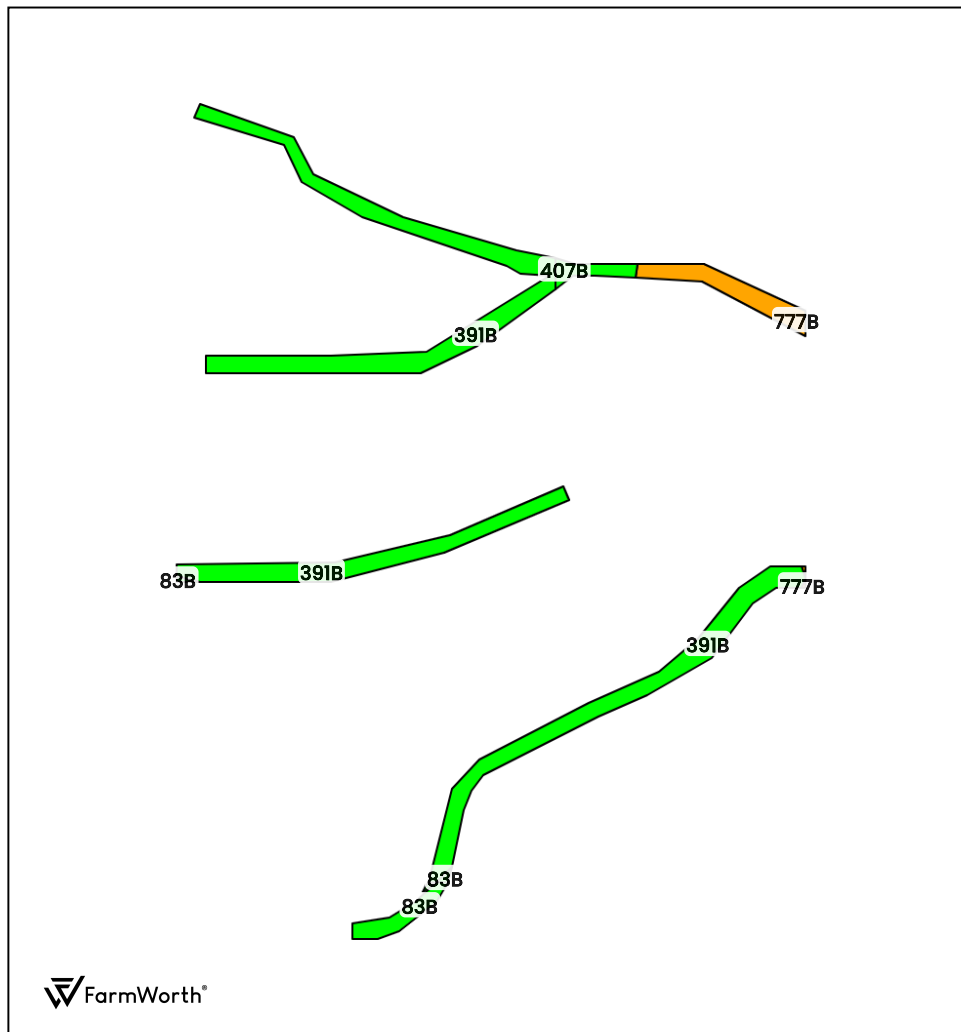
IA has updated the CSR values for each county to CSR2.  
Soils data provided by USDA and NRCS.





OELWEIN, IOWA FARM (170.80 AC TOTAL, 160.84 AC TILLABLE)

## CRP SOILS



County: **Fayette County, IA**

Location: **32-91N-9W**

Township: **Jefferson**

Acres: **4.98**

Date: **09/26/2025**



Field borders obtained from Farm Service Agency  
as of 2008

FarmWorth, LLC makes no representations or warranties, express or implied, as to the accuracy of any information, data, numerical values, boundaries, or any other information generated through the use of FarmWorth.com. User is solely responsible for independently investigating and determining all information provided through FarmWorth.com prior to use and waives any and all claims against FarmWorth, LLC for any inaccuracies or inconsistencies in the information and/or data.

Code	Description	Acres	% of field	IA CSR2	Overall NCCPI	Soil Class (Irr)	Soil Class (Non-Irr)	Drainage Class
391B	Clyde-Floyd complex, 1 to 4 percent slopes	4.09	82.09 %	87	89	-	2	Poorly drained
777B	Wapsie loam, 2 to 5 percent slopes	0.47	9.46 %	45	66	-	2	Well drained
83B	Kenyon loam, 2 to 5 percent slopes	0.25	5.03 %	90	89	-	2	Moderately well drained
407B	Schley loam, 1 to 4 percent slopes	0.17	3.42 %	81	84	-	2	Somewhat poorly drained
Average:				83.0	86.7			

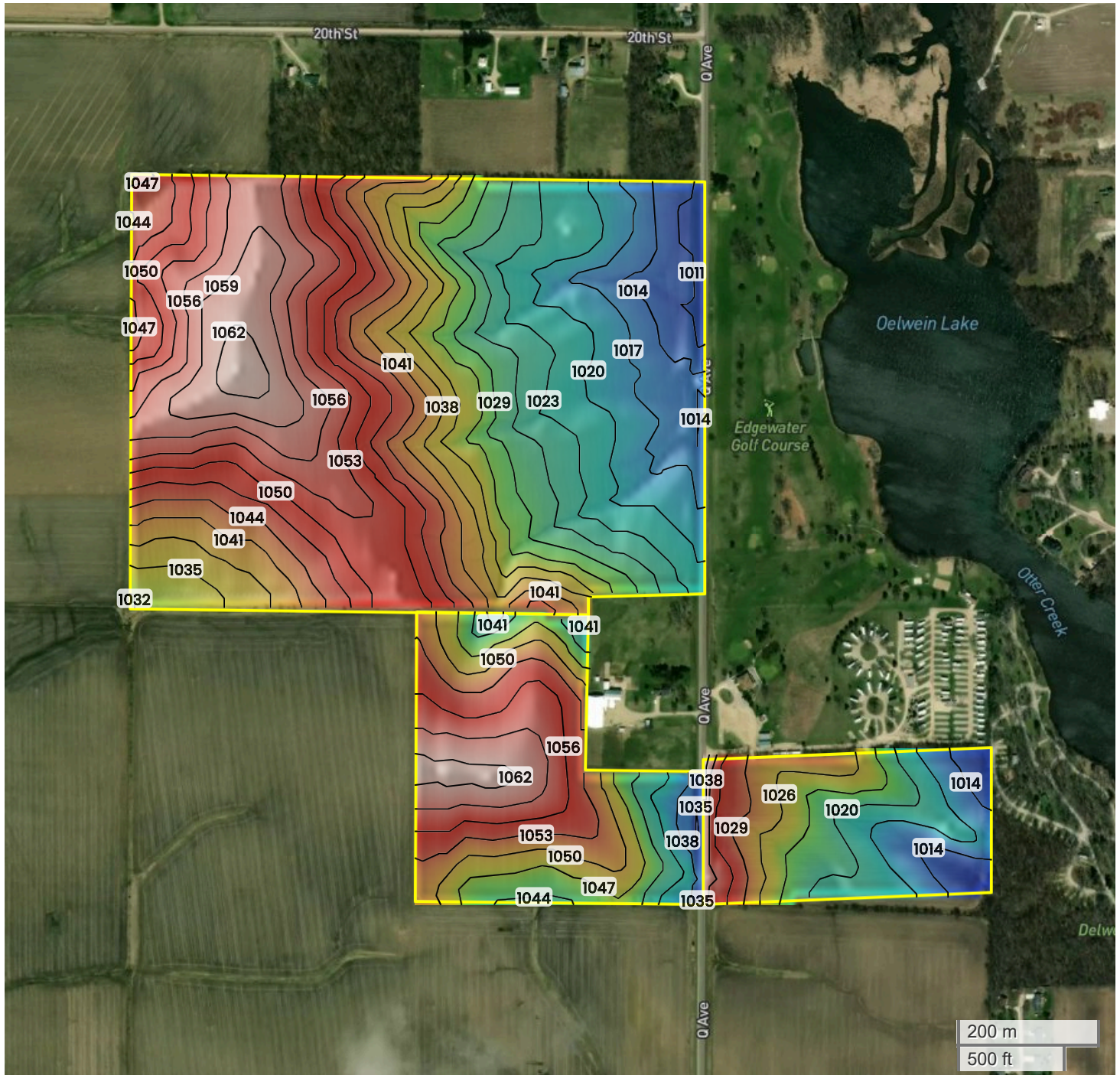
IA has updated the CSR values for each county to CSR2.  
Soils data provided by USDA and NRCS.





OELWEIN, IOWA FARM (170.80 AC TOTAL, 165.82 AC TILLABLE)

## TOPOGRAPHY



1011 ft

1062 ft



Center: 42.650051, -91.925961

32-91N-9W

Jefferson Township

Fayette County, IA

Source: USGS 10m DEM

Interval(ft): 3

Max: 1062.0 ft

Min: 1011.0 ft

Range: 51.0 ft

Average: 1036.5 ft



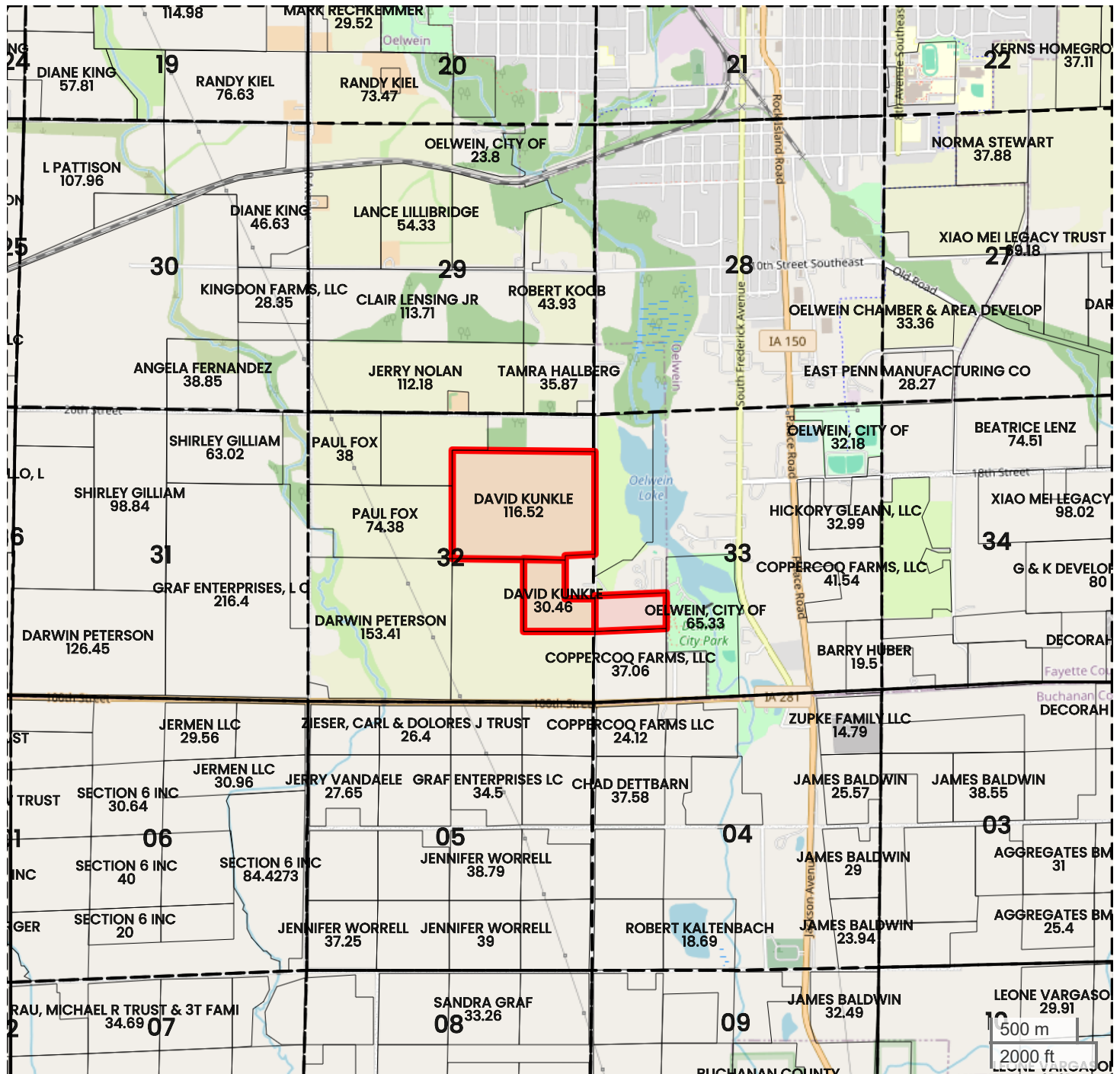
FarmWorth, LLC makes no representations or warranties, express or implied, as to the accuracy of any information, data, numerical values, boundaries, or any other information generated through the use of FarmWorth.com. User is solely responsible for independently investigating and determining all information provided through FarmWorth.com prior to use and waives any and all claims against FarmWorth, LLC for any inaccuracies or inconsistencies in the information and/or data.





OELWEIN, IOWA FARM (170.80 AC TOTAL, 165.82 AC TILLABLE)

## PLAT MAP



Center: 42.650057, -91.925947

32-91N-9W  
Jefferson Township  
Fayette County, IA



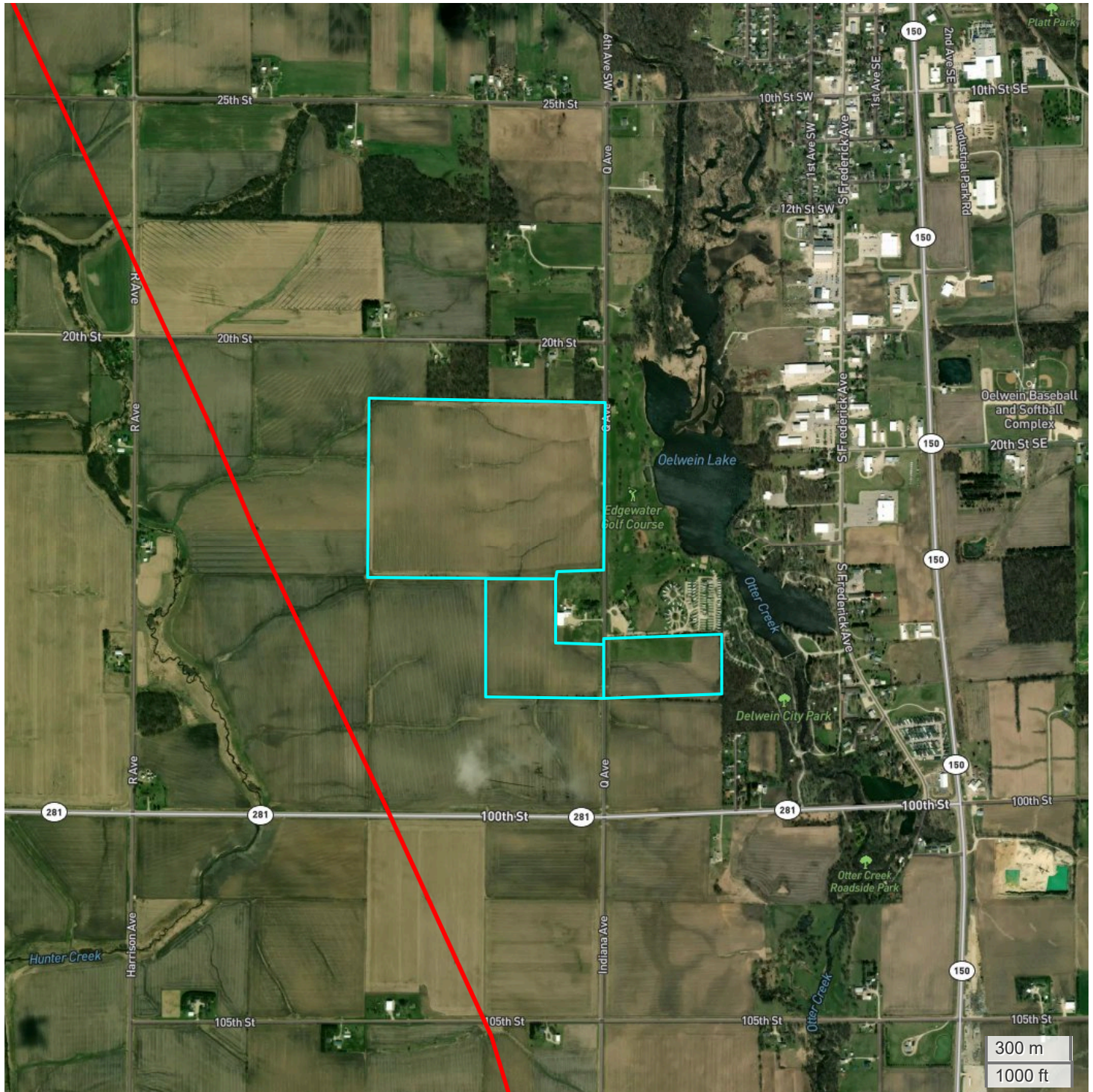
FarmWorth, LLC makes no representations or warranties, express or implied, as to the accuracy of any information, data, numerical values, boundaries, or any other information generated through the use of FarmWorth.com. User is solely responsible for independently investigating and determining all information provided through FarmWorth.com prior to use and waives any and all claims against FarmWorth, LLC for any inaccuracies or inconsistencies in the information and/or data.





OELWEIN, IOWA FARM (170.80 AC TOTAL, 165.82 AC TILLABLE)

## ENERGY MAP



FarmWorth, LLC makes no representations or warranties, express or implied, as to the accuracy of any information, data, numerical values, boundaries, or any other information generated through the use of FarmWorth.com. User is solely responsible for independently investigating and determining all information provided through FarmWorth.com prior to use and waives any and all claims against FarmWorth, LLC for any inaccuracies or inconsistencies in the information and/or data.

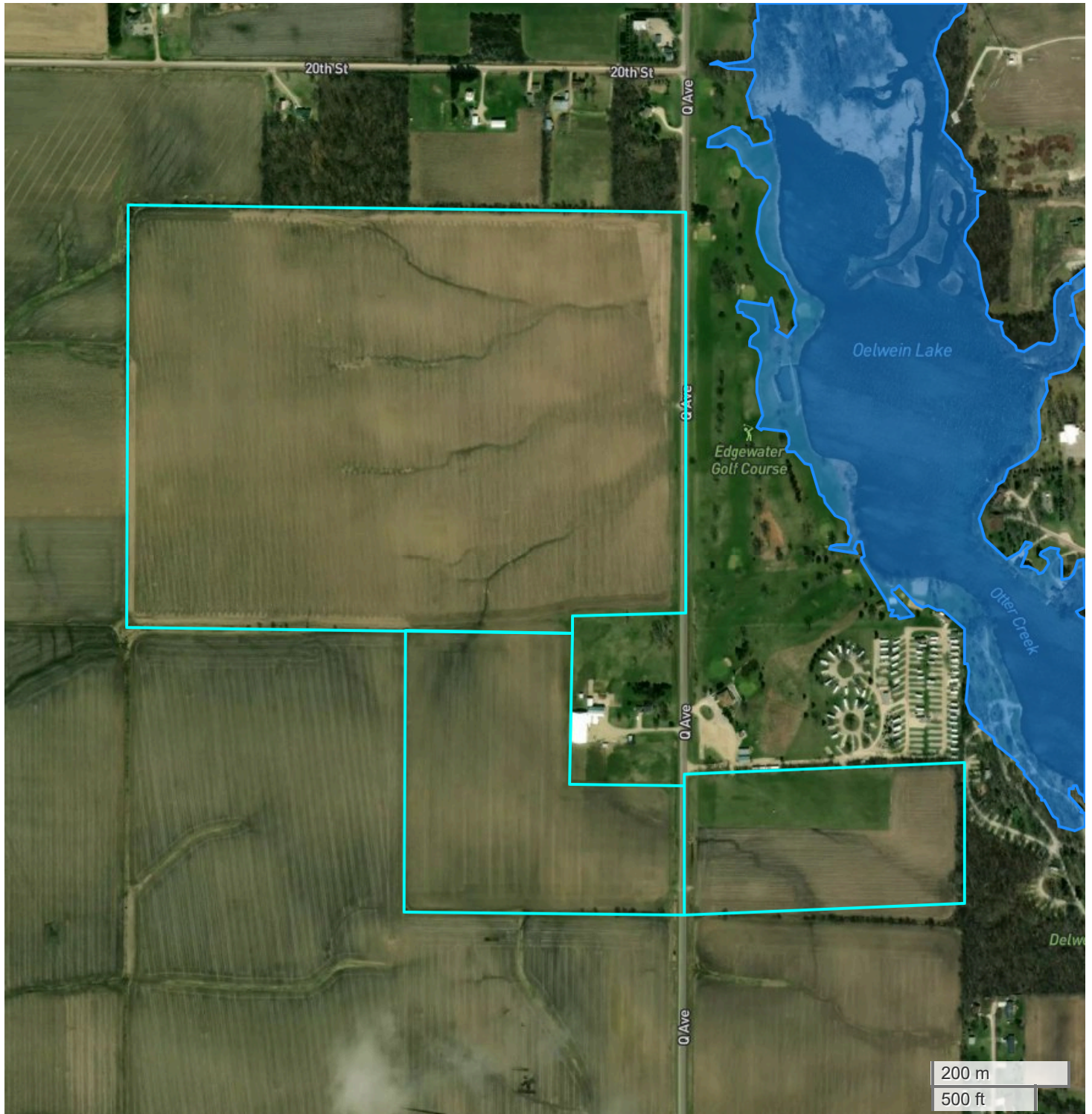
- Transmission Lines
- Substations
- Wind Turbine
- Wind Farm
- Solar
- Oil and Gas (Active)
- Oil and Gas (Abandoned)





OELWEIN, IOWA FARM (170.80 AC TOTAL, 165.82 AC TILLABLE)

## FLOOD HAZARDS



FarmWorth, LLC makes no representations or warranties, express or implied, as to the accuracy of any information, data, numerical values, boundaries, or any other information generated through the use of FarmWorth.com. User is solely responsible for independently investigating and determining all information provided through FarmWorth.com prior to use and waives any and all claims against FarmWorth, LLC for any inaccuracies or inconsistencies in the information and/or data.

### Significant Flood Hazards

- Regulatory Floodway (Zones AE, AO, AH, VE, AR)
- Without Base Flood Elevation (BFE), with BFE or Depth (Zones A, V, A99)



**TRACT #1**

**TRACT #2**

**TRACT #3**

**O AVENUE**

**OELWEIN LAKE**







OELWEIN, IOWA

IOWA HIGHWAY 3

20TH STREET

Q AVENUE

#1

#2

#3

IOWA HIGHWAY 281

IOWA HIGHWAY 150

FAYETTE COUNTY, IOWA

BUCHANAN COUNTY, IOWA

HAZLETON, IOWA